



RETE ONCOLOGICA PIEMONTE E VALLE D'AOSTA



Obiettivi

- ***Percorsi CAS-GIC Centri riferimento***
- **Formazione ed informazione**
- **Molecular Tumor Board**
- **Integrazione Ospedale Territorio**
- **Progetti Regionali**
- **Piano Oncologico Nazionale**
- **Accreditamento Rete Europea CCI4EU**

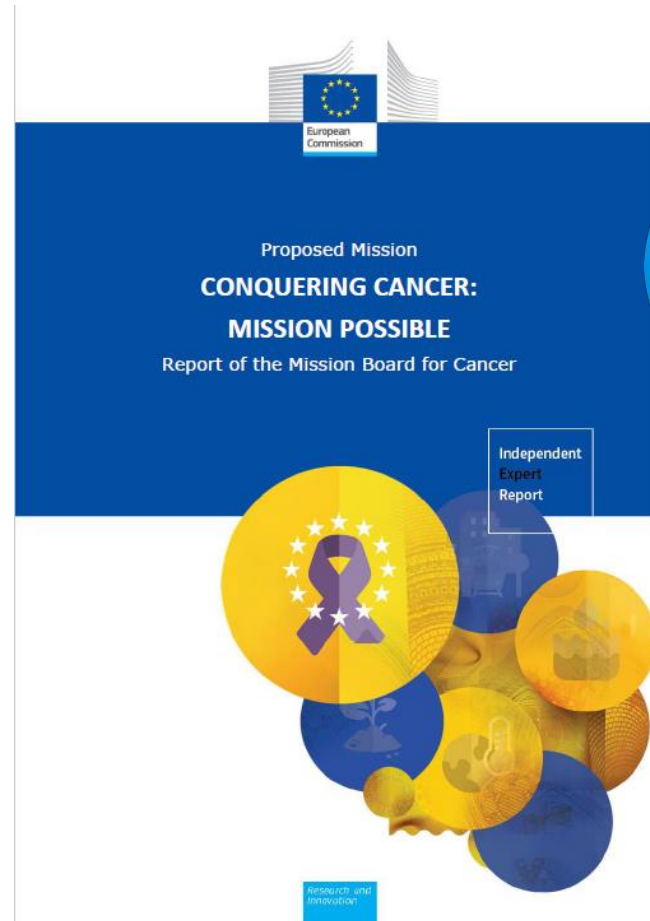
CCI4EU Project

Project and Involvement



As President of the European Commission Ursula von der Leyen said:

“we need to build a stronger European Health Union, a Union where we are united in diversity and adversity, where we work together to overcome our differences and where we build today the healthier, stronger and more respectful world we want our children to live in tomorrow. With respect to tackling cancer, the Mission on Cancer and the Europe’s Beating Cancer Plan, the Commission services will therefore now explore policy options and use of financial instruments to initiate a gradual and synergised implementation of both initiatives, in close cooperation with Member States.”



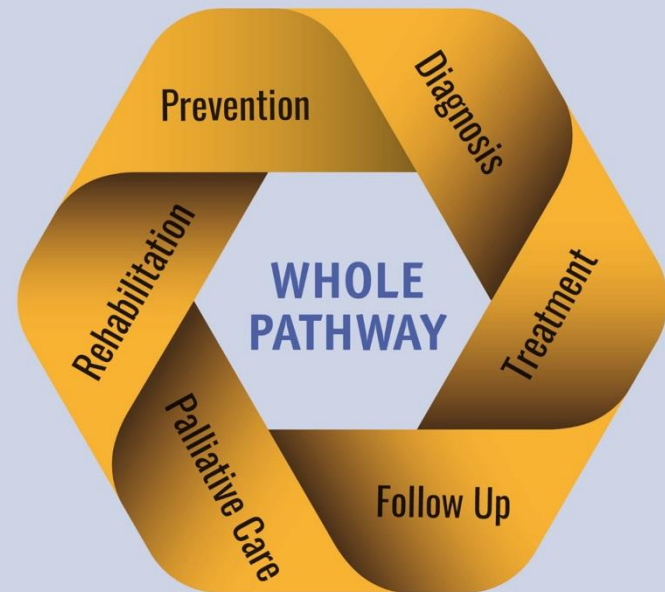
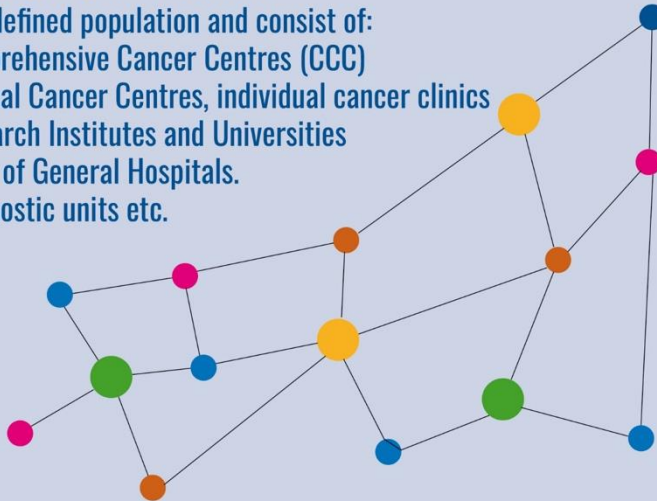
What is a Comprehensive Cancer Infrastructure? (CCI)

CCI A Comprehensive Cancer Infrastructure should also include public functions such as public health, screening, primary and community care, and population cancer registries. Other supporting infrastructures such as –omics and clinical trials platforms

CCN

Comprehensive Cancer Networks* serve a defined population and consist of:

- Comprehensive Cancer Centres (CCC)
- Clinical Cancer Centres, individual cancer clinics
- Research Institutes and Universities
- Units of General Hospitals.
- Diagnostic units etc.



* Including Comprehensive Cancer Care Networks according to CrANE WP 6 (CCCN)

Requested CB interventions by 12 shortlisted CCI

Theme:	CCI ID:	EE1	HR1	SK1	ES1/6	RO1	CZ1a/b	IT8	FR4	PT1	IE1	BG1/2	PO1
Structure of CCI													
CCC													
Interfaces													
Discovery & translational research													
Clinical research													
Outcomes research													
Screening & early detection													
Patient pathways													





CCI4EU

S.M.A.R.T. OBJECTIVES/ACTION PLAN
Italy Piemonte/Valle d'Aosta

PATIENT PATHWAY

- **Improve dissemination of patient education materials**
- **Develop integrated care coordination system**
- **Implement data tracking and analysis system**
- **Integrate telehealth info patient pathways**
- **Invest in research and innovation in patient pathways**

CCI4EU

S.M.A.R.T. OBJECTIVES/ACTION PLAN
Italy Piemonte/Valle d'Aosta

SCREENING AND EARLY DETECTION

- Establish a collaborative working group to address fragmented system
- Launch targeted awareness campaigns for cancer screening
- Establish academic partnerships and strengthen regional alignment for screening and early detection
- Enhance the referral system for screening services Esmg



CCI4EU

S.M.A.R.T. OBJECTIVES/ACTION PLAN
Italy Piemonte/Valle d'Aosta

CLINICAL RESEARCH

- **Constitute a steering committee for clinical research**
- **Formalize the clinical research infrastructure within the network**
- **Involve other hospitals in regional clinical trials**
- **Implement decentralized clinical trials**
- **Improve and promote real world evidence (RWE) data collection**



CCI4EU

S.M.A.R.T. OBJECTIVES/ACTION PLAN
Italy Piemonte/Valle d'Aosta

GOVERNANCE CHALLENGES

- Define hub and spoke competencies
- Improve patient pathway management and establish a robust quality control system for diagnosis
- Implement telemedicine solutions
- Advance digital pathology capabilities and develop a multidisciplinary pathological review network focused on outcomes
- Harmonize practices across network